

Home Learning Spring 1 Year 1



CHERRY TREE
PRIMARY SCHOOL

Theme: Who lives on a farm?

In **Science** we will name and identify a variety of common animals and group them in different ways. In **Geography** we will use basic geographical vocabulary to describe key human features of a farm and where we find them. We will also practise our chronological skills in **History** to sequence a day in the life of a farmer. In **English** lessons our writing will be based on fiction and non-fiction texts about farms. We will look at portraits of animals in **Art** lessons. We will build in **D&T** our own tractors and explore mechanics. In our **RE** we will explore friendship, and read different stories about Jesus being a kind friend. We will sing songs in **Music**, learn basic **Spanish** greetings and use the chrome books in **Computing**.

Welcome to our home learning menu. This home learning sheet will be sent home each half term with a choice of 'menu' activities for you to choose to complete. There are some daily tasks too listed below. Bring back all of your menu tasks by Wednesday 8th February ready to share with the class ☺.

Reading – 5 minutes, every day	Please read at home daily. This could be a shared read with a member of your family, an opportunity for you to read to an adult in your family or a time to quietly read and enjoy a good book on your own. You can read stories, fact books, letters, magazines, newspapers, recipes, instructions or online text on https://www.oxfordowl.co.uk Username: year1cts Password: cherry <i>Please remember to sign your child's reading record every time they read.</i>
Maths- 5 minutes, every day	In Maths lessons this half term, we will learn about adding, subtracting Please try to do some counting or ordering practise every day (toys, stairs, fruit, chocolate buttons, houses you walk past... anything really!) If you have any Orchard Toy puzzles, these are really good and fun for the family. Please feel free to log onto a website or an app such as NumBots https://play.numbots.com/#/account/school-login/35341) Topmarks https://www.topmarks.co.uk/Search.aspx?Subject=16&AgeGroup=2 ICTgames https://ictgames.com/mobilePage/index.html BBC Bitesize https://www.bbc.co.uk/bitesize/subjects/zjxhfg8
Phonics- 5 mins, 3 x week	We will let you know the sounds we are learning every week, please find as many words as you can that have these sounds.
Handwriting- 5 mins, 3 x week	Practise writing every letter of the alphabet neatly and on the line. Do you know the capital and little letters? Can you write them in something messy? (shaving foam, sand, paint) Challenge: Can you write a sentence about your day at school, something you have discovered at home, a letter to a book character, a shopping list....)
Keeping connected	We will be sharing the amazing things we do in school on Twitter – @CTS_Watford (Cherry Tree School) @MissWCTS (Miss Wolstencroft) @MissMcCCTS (Miss McCafferty) @MsHoareCTS (Ms Hoare) @MrsSulamanCTS (Mrs Sulaman) If you have not already downloaded Marvellous Me then please ensure that you do. If you are not sure of your log in details then just ask and we can help to get you following us.



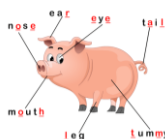


Theme Menu Year 1

Choose any **2 theme** activities to complete. Bring back to school **by Wednesday 8th February** ready to share ☺.

Science: Observing farm animals

Choose some animals that live on a farm. Find some photographs and closely observe what body parts they have and what they look like. Draw and label a picture of each animal.



Challenge: Write sentences about how each animal is different. Do you know what each body part is used for? *E.g. Pigs have a snout for smelling and digging in the soil.*

Geography: Draw a map of a farm

Have an explore of different farm websites and look at the maps of the farm. Can you have a go at creating your own map of a farm. It can be of a farm you have visited or you can create your own farm. Think about what animals might live on your farm, if there are any buildings etc.

Challenge: Can you add a key to your map to show what all the symbols mean?

willowsactivityfarm.com
www.omdfarm.co.uk/



PSHE: Dreams and Goals

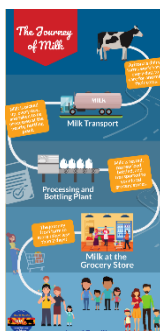
In PSHE we are learning about setting goals and thinking of ways we can achieve them.



Think about a time when you achieved a big goal you set yourself, it might be riding a bike or tying your shoe laces. What did you do to achieve it and how did you feel? Write some sentences or draw some pictures to show your achievements.

History: What journey does our food take?

Choose a food produce of your choice that is produced on a farm for example milk, eggs or vegetables and draw a timeline of its journey from getting from the farm to the supermarket.



How is it grown/made? What happens to it on the farm? Where does it go from the farm? Does it need to be packaged? How does it get to the supermarket? Make a timeline to show its journey.

DT: Can I build a farm vehicle?

In our DT lessons in school, we will make moving vehicles. What could you use to make a farm vehicle with wheels? Use card, junk modelling, lego or other construction materials to make a **SMALL** moving vehicle.



www.highlights.com/parents/crafts/toy-tractor

Art: Can I copy an artists style?

Kate Simpson is a modern artist who specialises in painting farm animals because she lives on a farm. Her paintings are so detailed they look real! She uses Have a look at some portraits by Kate Simpson on her website. www.katesimpsonart.uk/ Which paintings do you like best? Can you copy her style by sketching a farmyard animal? (Sheep, horse, pig, cow, duck, sheepdog)



Writing Menu Year 1

Choose **1 writing** activity to complete. Bring back to school **by Wednesday 8th February** ready to share ☺.

Write instructions

Have you ever grown a plant or some vegetables? Have you got a pet at home? Writing some instructions explaining how to look after a plant or animal. Think about what they need to survive. You could also draw pictures to go with each step.



Challenge: Can you use full stops and capital letters in red like we do in class?

Write farm animal factual sentences

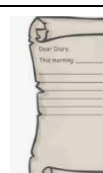
Research a farm animal using a book or computer. Write some factual sentences. Are they a mammal, reptile, amphibian, fish, insect or bird? What do they eat? Where do they sleep? Write in your homework book or make your own book with lots of pictures.

Challenge: Can you use neat handwriting, finger spaces and make sure each letter is sitting on the line?



Write a diary

Pretend you are a farmer looking after the animals on a farm. Think about all the jobs you would do throughout your day.



Write a diary of everything you would do in your day, working on a farm

Challenge: Can you write in the past? *E.g. I **got** up. I **milked** a cow. I **cleaned** the stable. I **picked** up the eggs. I **went** to the field to check the sheep.*

Home Learning Spring 1 Year 1

