



An INCLUSIVE | MULTI ACADEMY TRUST School

EARLY YEARS FOUNDATION STAGE



"Learning together, learning for life"

Berry Avenue, Watford, Herts WD24 6ST

01923 245490

admin@cherrytree.herts.sch.uk

www.cherrytree.herts.sch.uk



WELCOME

At Cherry Tree, ensuring a child's learning is fun, purposeful and engaging is essential. In our early years, there are plenty of opportunities for independent, group and whole class learning during the day which are based both in the classroom and outdoors.

Throughout the year we cover a range of exciting topics such as space, dinosaurs and mini beasts. Our curriculum ensures children become independent and inquisitive young learners and flourish as they take a journey through their education.

We treat every child as an individual and we look forward to welcoming you and your family to our school.

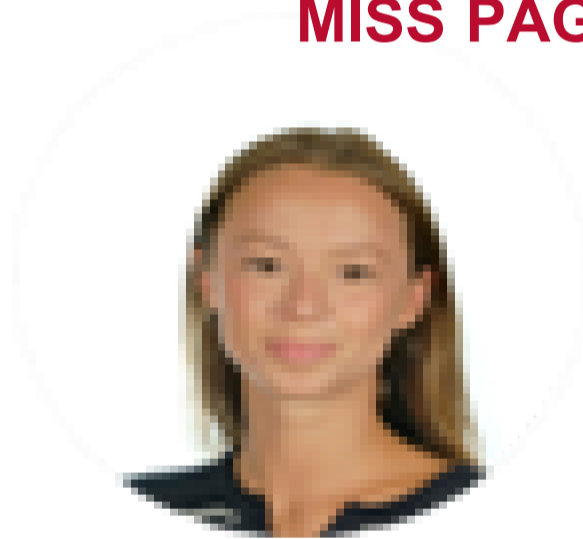
OUR EARLY YEARS TEACHERS

MISS BIRDSALL, EYFS/KS1 PHASE LEADER/ NURSERY TEACHER

I am extremely proud to be Early Years Leader of this school. I have been teaching since 2006 and started at Cherry Tree in 2012. I believe we are the starting point for your child's learning. I work with my outstanding team to engage your child through memorable and exciting experiences here at school. Working closely with parents ensures we all work together to make a difference in the life of your child.



MISS PAGE, RECEPTION TEACHER



I have been a teacher at Cherry Tree since 2025. Over the years I have gained many different experiences and completed qualifications in various teaching roles. I can honestly say that Cherry Tree is a warm and welcoming environment and supports one another to grow and develop their life skills. I look forward to many more years working here.

MRS CHAUHAN, RECEPTION TEACHER

I have been teaching for over 20 years here at Cherry Tree. I firmly believe that the Early Years is the most rewarding place to be and such an important part of your child's development. Learning through play has always been a particular interest of mine as I thoroughly enjoy observing children explore their environment. One of the greatest privileges of being in Early Years is seeing the curiosity in children at play and my roles enables me to create meaningful experiences. I have been fortunate enough to have worked with so many families here and look forward to supporting many more children in building happy memories.



WHAT OUR DAY LOOKS LIKE

BUSY FINGERS

The children start the day with busy fingers, a fine motor skills intervention. This helps the muscles to develop in our fingers.



SNACK TIME

Each day the children have the opportunity to sit at the snack table and enjoy fruit, vegetables, milk and water.



CHILD INITIATED LEARNING

Child initiated learning is an important role in children's learning and development. Our children explore and learn from their own thoughts and ideas through the freedom and creativity that child- initiated learning and play enables.



OUTDOOR PLAY

Children will have time to go outside, use the play equipment and explore our lovely and vast outside playground and garden.



FREQUENTLY ASKED QUESTIONS

How big are the class sizes?

At full capacity we have 30 children in each reception class and 32 children at each session in our nursery.

How do I find out about my child's learning?

We send a weekly newsletter home and we also use a programme called Tapestry. This is where we create a learning journal for all children within early years and as parent, you can follow your child's learning at home via an app. This builds a fantastic home-school relationship.

What phonics programme so you use to teach the children to read?

At Cherry Tree we use Little Wandle. <https://www.littlewandle.org.uk/resources/for-parents/>

Do you provide a snack?

We provide every child in Early years with a healthy morning snack. You also have the choice to pay for your child to have a carton of milk each day.

Can my child have a school dinner?

, all children in Reception and key stage 1 are entitled to a free school meal. Alternatively you do have the choice of a packed lunch from home. Nursery can pay for a hot meal daily.

Do you offer breakfast and after school club?

Yes, we offer wrap around care both before and after school.
<https://www.cherrytree.herts.sch.uk/page/?title=Wraparound+Care&pid=267>

ADMISSIONS

Admissions for Reception class will be processed through the [Herts Admissions Team](#).

Nursery Admissions are managed by Cherry Tree Primary School.

If you would like apply for a Nursery place, please contact the school office or visit our [admissions pages on our website](#) for further information.

OUR SCHOOL VIDEO



READY FOR SCHOOL

